

Bulletin: BCBC 2024 Part 9

Backing for Adaptability

Bulletin # 25-01
Created: March 2nd, 2025

Purpose

To inform architects, engineers, developers, builders, subcontractors, designers and homeowners of the new adaptability requirements of the 2024 BCBC that are taking effect as of March 10th, 2025.

General Information

This bulletin is for informational purposes only. Please be sure to consult BC Plumbing Code, National Plumbing Code, and any relevant City of Kelowna Bylaws.

Adaptable Dwelling Unit Code Changes:

- Dwelling units include detached houses, semi-detached houses, houses with a secondary suite, duplexes, triplexes, townhouses, row houses and boarding houses.
- Dwelling units must provide at least one bathroom with walls adjacent to the water closet and shower or bathtub location reinforced (backing).
- Reinforced grab bar locations are intended to ensure there is adequate backing for the installation of grab bars by the occupant in the future.
- Part 3 buildings refer to 3.8.5 of the 2024 BCBC.

Illustrations Below Indicate Backing Locations:

- Examples of an adaptable configuration for the reinforcement of stud walls around a shower or bathtub. (hatched area)

Example 1 of 2



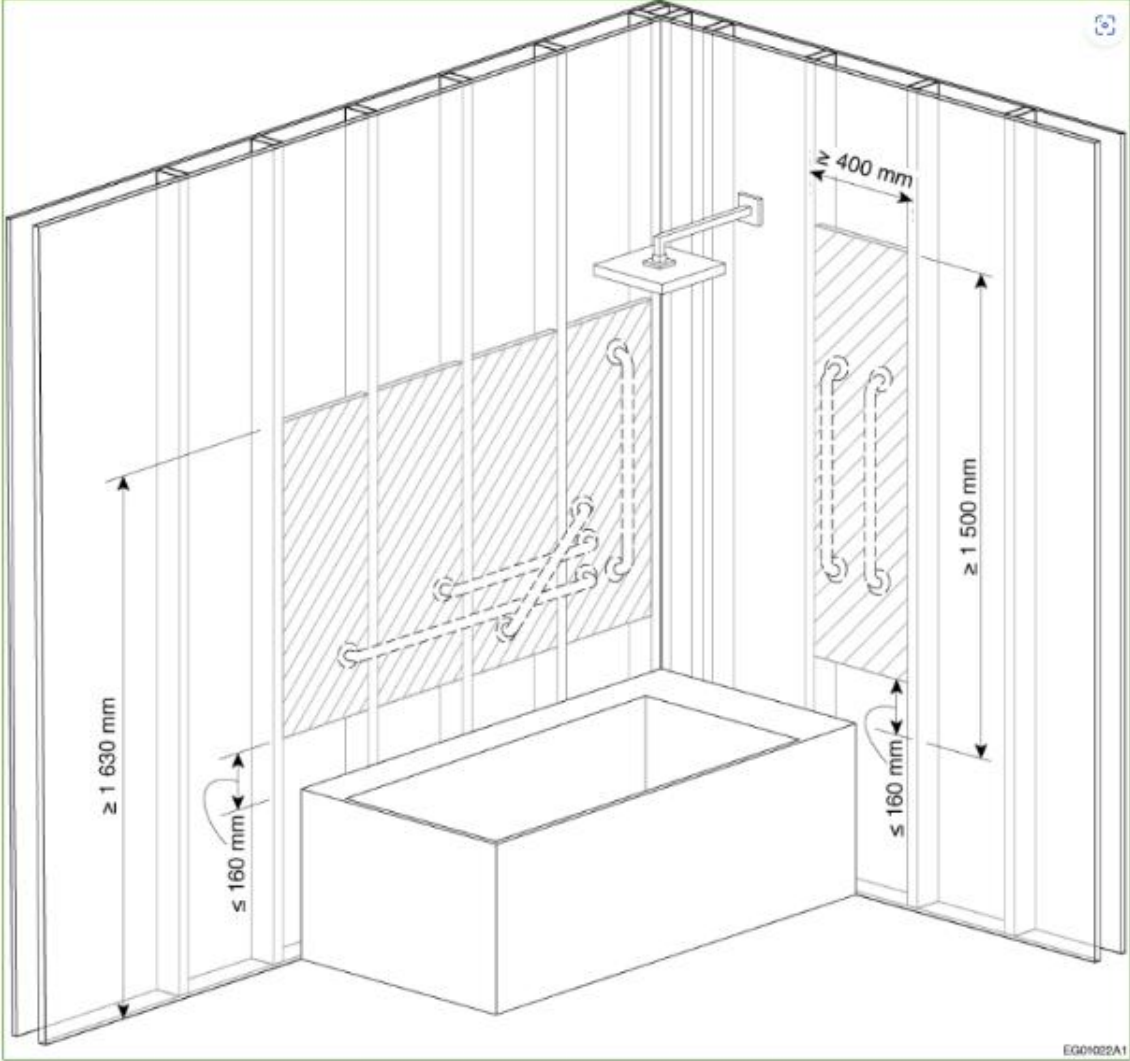
Building and Permitting
1435 Water Street
Kelowna, BC V1Y 1J4
TEL 250-469-8960
FAX 250-862-3314
developmentservicesinfo@kelowna.ca

Bulletin: BCBC 2024 Part 9

Backing for Adaptability



Example 2 of 2



Bulletin: BCBC 2024 Part 9

Backing for Adaptability

- Examples of an adaptable configuration for the reinforcement of stud walls around a water closet. (hatched area)

