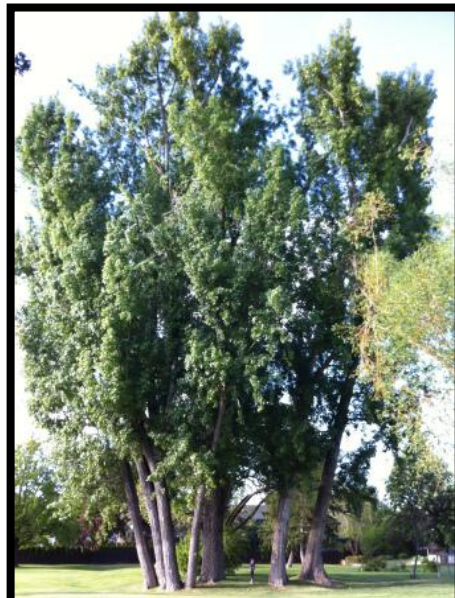


Kinsmen Park

Rental Space - Wedding Ceremonies



General Information

Located at 2600 Abbott Street, in the south Pandosy Area
Park Hours: 6:00 a.m. - 11:00 p.m.

Tall leafy trees and large grassy areas, give Kinsmen Park the perfect amount of sun and shade. Dip your feet into Lake Okanagan, have lunch at one of the picnic tables, play a round of tennis or enjoy the on-site playground while taking in the Okanagan heat. Kinsmen Park is equipped with washrooms for your convenience.

Park Amenities

- Dogs are not permitted
- 2 tennis courts, resurfaced and relined in 2013.
- Washrooms are open mid April to mid October
- Playground is located steps away from the tennis court.
- Picnic tables & benches are located throughout the park
- Adjacent to Maude Roxby Wetlands
- A retaining wall runs along the shoreline with no sandy beach.
- Electrical services are not available in this park.



Kinsmen Park

Rental Space - Wedding Ceremonies



Bookings accepted for Wedding Ceremonies ONLY

- Maximum 40 person capacity.
- Bookings will be accepted between 10:00 a.m. - 8:00 p.m.
- Maximum 3 hour rental permitted for wedding ceremonies.
- Only ONE booking will be permitted daily.
- Current park rental fees apply. Payment is due upon booking.
- Wedding ceremony bookings are accepted starting February 14 (or 1st working day) of the current year and are for that year only.
- \$300.00 Damage deposit is due one week in advance of booking date.
- Insurance may be a required depending on number of guests in attendance. Options and rates will be discussed at time of booking.
- No staking (ground penetration) permitted.
- Park must still remain open to the general public.
- All garbage generated by your booking must be removed from the park.
- No confetti, rice or bird seed are permitted in City park or any other city owned property.
- No stapling, taping, nailing or in any way attaching anything to any building structure, benches, playground, trees and fencing.
- Contact Parks Coordinator at 250 469-8955, at least one week prior to rental to discuss site requirements.
- Electrical service is NOT available at this park.
- Parking will NOT be designated/reserved for bookings.

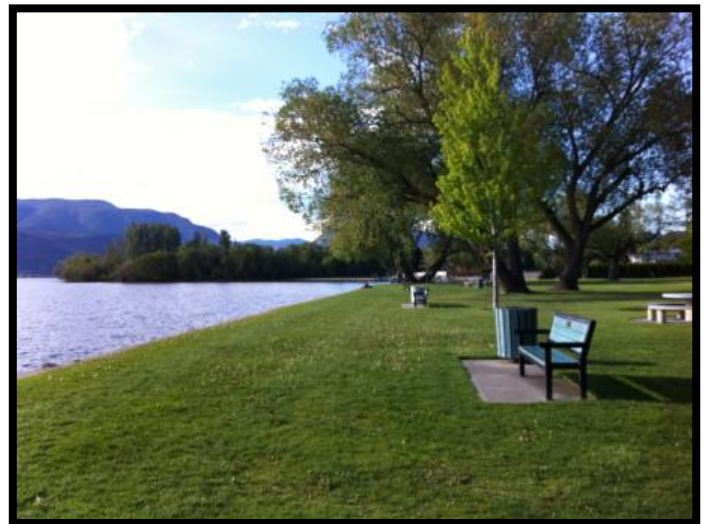


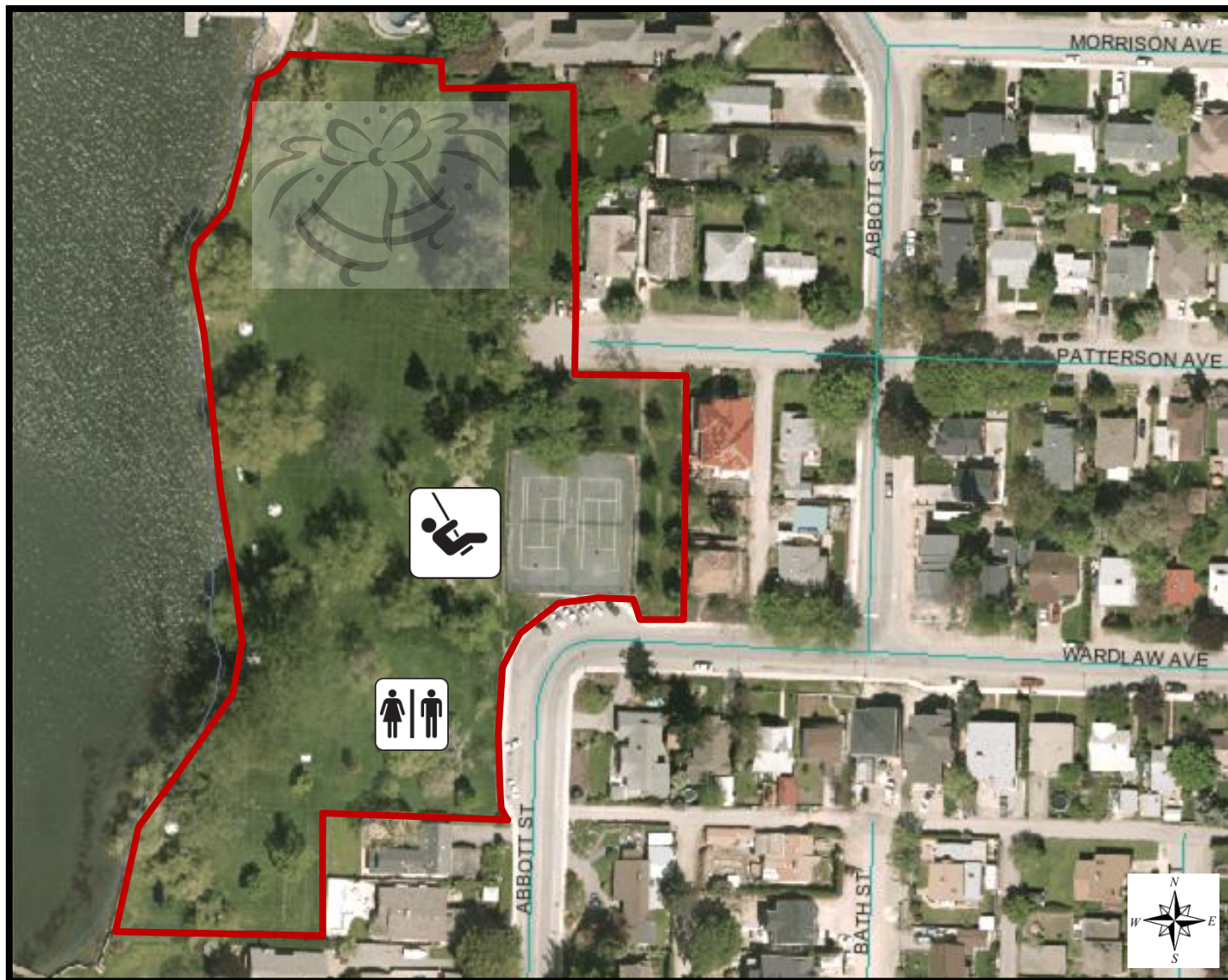
Photo credit: wordpress.com

Kinsmen Park

Rental Space - Wedding Ceremonies



Bookable space for wedding ceremony



Contact Us
Outdoor Events Coordinators
TEL 250 469-8853/250 469-8409
outdoorevents@kelowna.ca
Parkinson Centre, 1800 Parkinson Way