

# STANDARD DETAIL DRAWINGS

**Legend**

- Watercourse
- Waterbody
- Wetlands
- Parcel
- City Boundary
- HILLSIDE AREAS

For development in Hillside Areas, the City's focus will be on safe conveyance. Roof or site drainage must discharge directly to the storm system. The City will not permit infiltration to ground except for foundation drainage.

Where storm drains are not available, the City will require a hydrogeological review provided by a qualified Professional (P.Eng. or P.Geo.) to ensure that site infiltration does not exceed pre-development conditions, impact slope stability or off-site seepage, or impact downhill properties. The terms of reference of the review must be confirmed by the City Engineer and approved as a condition for obtaining a Development Permit.

Refer to City of Kelowna Bylaw # 7900, Schedule 4, Section 3.1.4 & 3.9.12b

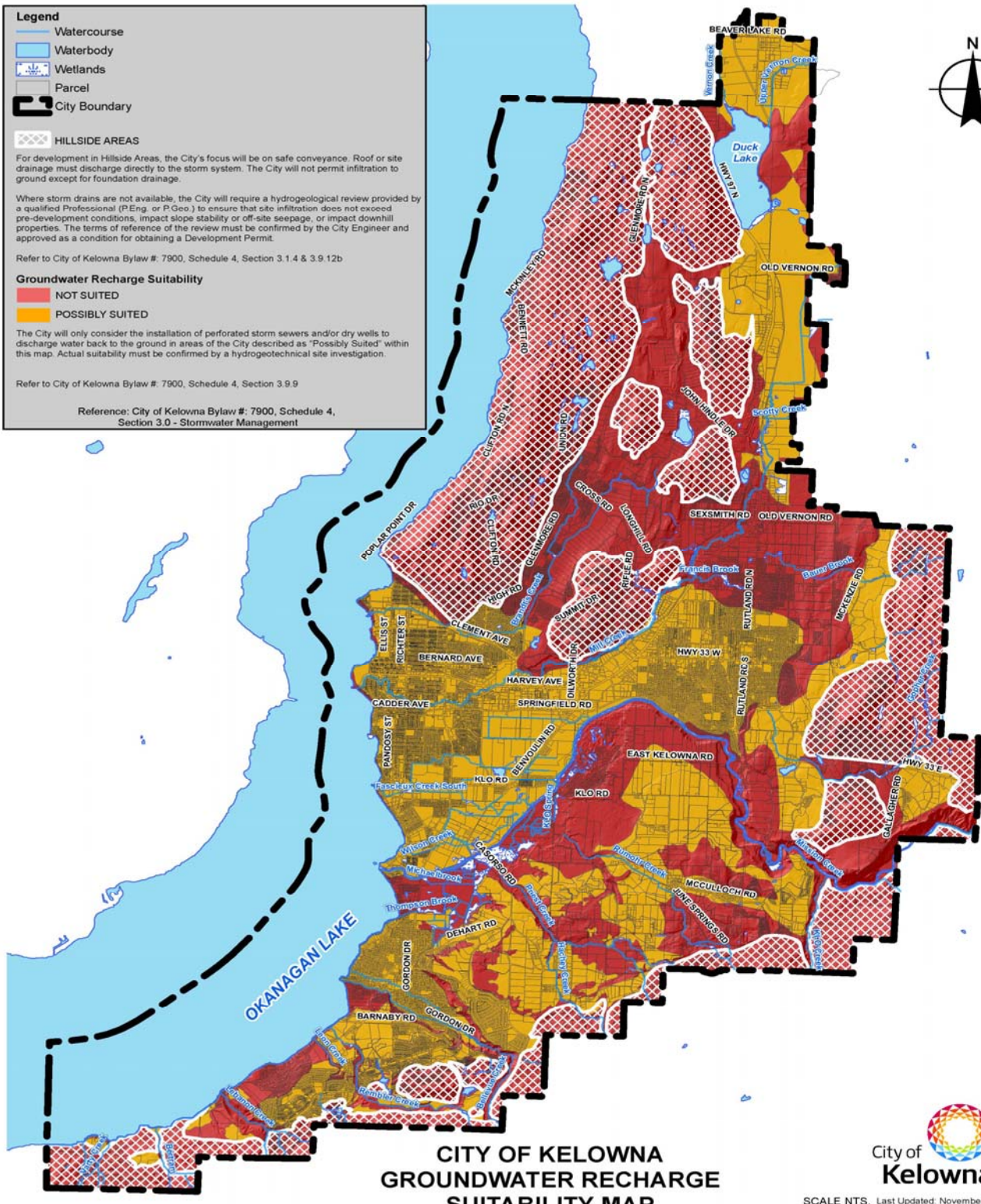
**Groundwater Recharge Suitability**

- NOT SUITED
- POSSIBLY SUITED

The City will only consider the installation of perforated storm sewers and/or dry wells to discharge water back to the ground in areas of the City described as "Possibly Suited" within this map. Actual suitability must be confirmed by a hydrogeotechnical site investigation.

Refer to City of Kelowna Bylaw # 7900, Schedule 4, Section 3.9.9

Reference: City of Kelowna Bylaw # 7900, Schedule 4, Section 3.0 - Stormwater Management



**CITY OF KELOWNA  
GROUNDWATER RECHARGE  
SUITABILITY MAP**



SCALE NTS. Last Updated: November 05/19