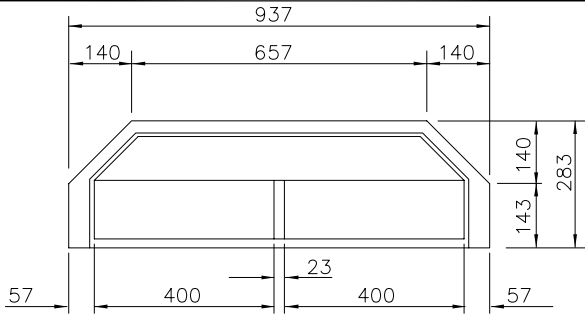
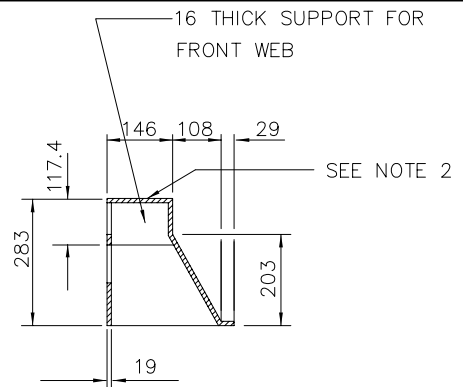


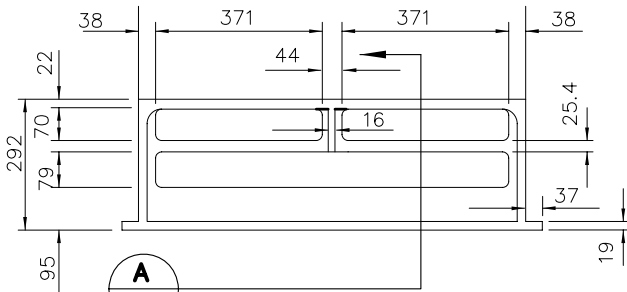
STANDARD DETAIL DRAWINGS



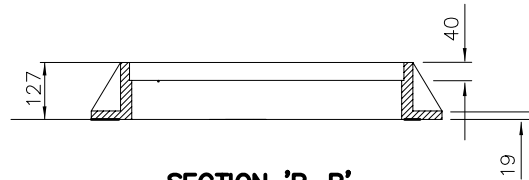
BOTTOM VIEW
(BARRIER CURB ONLY)



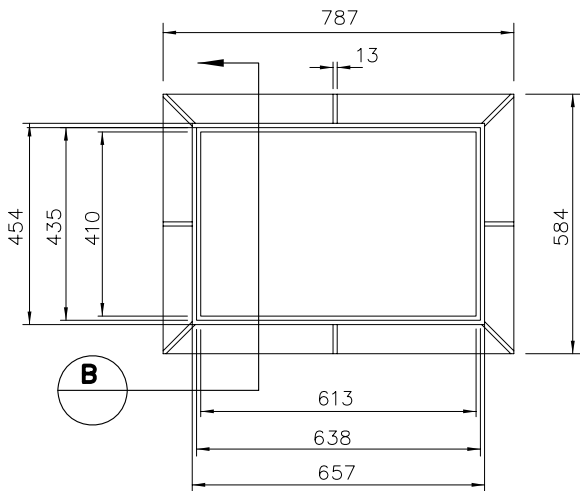
SECTION 'A-A'



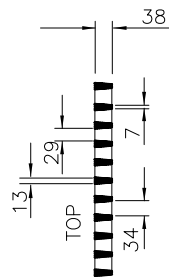
FRONT ELEVATION
(BARRIER CURB ONLY)



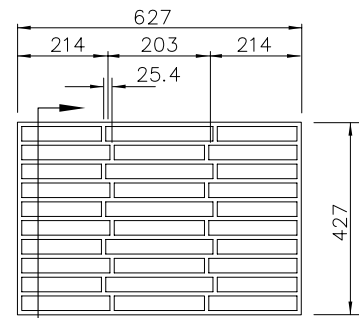
SECTION 'B-B'



PLAN VIEW
(CATCH BASIN FRAME CASTING)



SECTION C-C



PLAN VIEW
(CATCH BASIN GRATE)

NOTE:

1. CURB INLET CASTING GRATE AND FRAME CASTING TO BE DUCTILE IRON (DESIGNED FOR H-20 LOADING)
2. FISH DESIGN CAN BE ADDED TO TOP OF SIDE INLET BUT MUST BE APPROVED BY THE CITY ENGINEER PRIOR TO CONSTRUCTION.
3. FOR ROLL CURB USE ROLLOVER FRAME & GRATE (WESTVIEW SALES LTD RB7 OR EQUAL)

P:\DRAFTING\STD-DWGS\MMCD-STD\SS-S11b.dwg

CATCH BASIN CASTINGS
COMBINED SIDE & GUTTER INLET

APRIL 15/08

SS-S11b