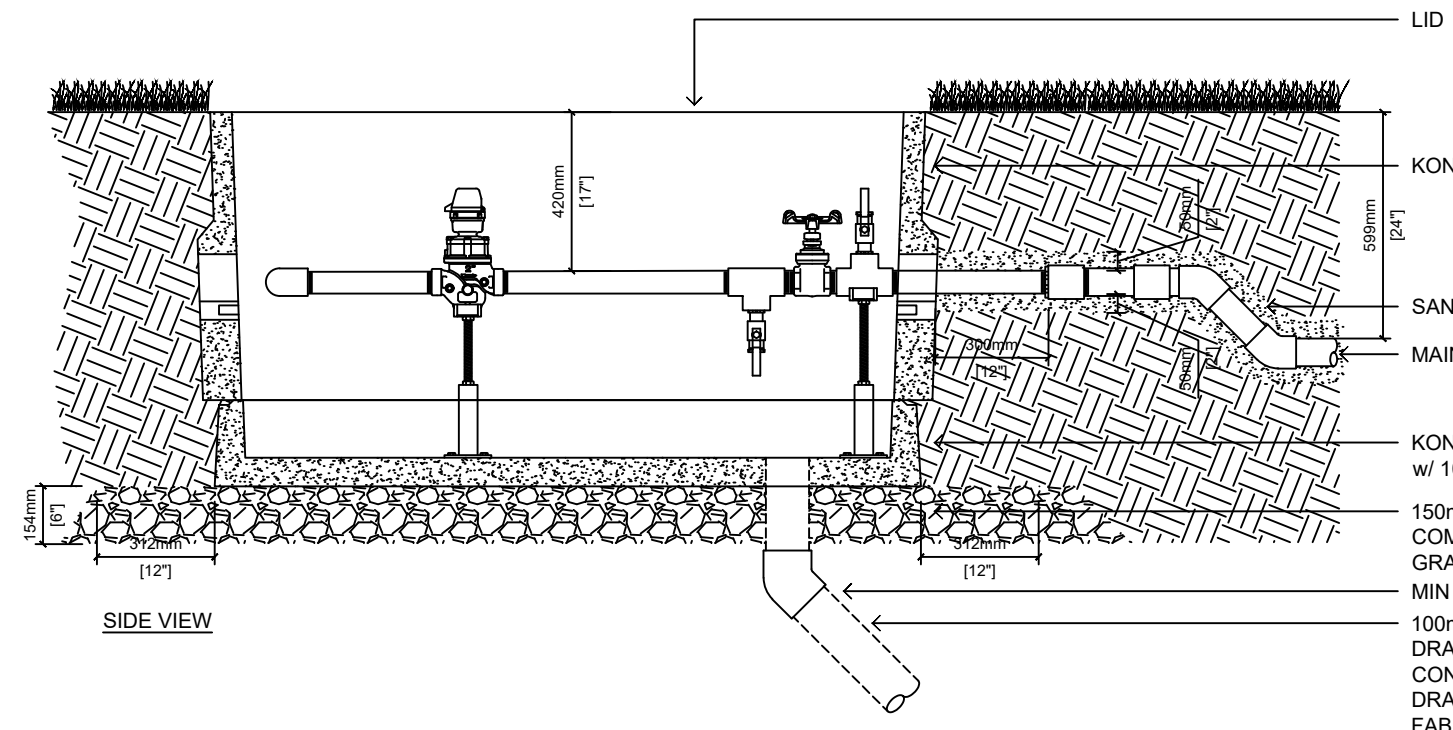


PLAN VIEW - CHAMBER

#	25mm POC	38mm POC	50mm POC
1	BRASS COMPRESSION x MPT w/ STAINLESS STEEL PIPE INSERT	BRASS COMPRESSION x MPT w/ STAINLESS STEEL PIPE INSERT	BRASS COMPRESSION x MPT w/ STAINLESS STEEL PIPE INSERT
2	BRASS COUPLER SIZED TO INCOMING PIPE w/ 25mm BRASS REDUCING BUSHING	BRASS COUPLER SIZED TO INCOMING PIPE w/ 38mm BRASS REDUCING BUSHING	BRASS COUPLER SIZED TO INCOMING PIPE w/ 50mm BRASS REDUCING BUSHING
3	25mm BRASS NIPPLE, EXTEND TO 300mm FROM VAULT	38mm BRASS NIPPLE, EXTEND TO 300mm FROM VAULT	50mm BRASS NIPPLE, EXTEND TO 300mm FROM VAULT
4	25mm GATE VALVE	38mm GATE VALVE	50mm GATE VALVE
5	BLOW-OUT ASSEMBLY w/ 25mm BRASS TEE, 25mm BRASS NIPPLE, 25mm BRASS BALL VALVE, w/ AIR RELIEF VALVE	BLOW-OUT ASSEMBLY w/ 38mm x 25mm BRASS TEE, 25mm BRASS NIPPLE, 25mm BRASS BALL VALVE, w/ AIR RELIEF VALVE	BLOW-OUT ASSEMBLY w/ 50mm x 25mm BRASS TEE, 25mm BRASS NIPPLE, 25mm BRASS BALL VALVE, w/ AIR RELIEF VALVE
6	PIPE STAND	PIPE STAND	PIPE STAND
7	25mm BRASS NIPPLE	38mm BRASS NIPPLE	50mm BRASS NIPPLE
8	25mm BRASS COUPLER	38mm BRASS FLANGED ADAPTER	50mm BRASS FLANGED ADAPTER
9	25mm PURVEYOR APPROVED WATER METER	38mm PURVEYOR APPROVED WATER METER	50mm PURVEYOR APPROVED WATER METER
10	25mm DOUBLE CHECK VALVE ASSEMBLY	38mm DOUBLE CHECK VALVE ASSEMBLY	50mm DOUBLE CHECK VALVE ASSEMBLY
11	25mm BRASS UNION	38mm BRASS UNION	50mm BRASS UNION
12	25mm BRASS ELBOW	38mm BRASS ELBOW	50mm BRASS ELBOW
13	25mm PRESSURE REDUCING VALVE (IF REQUIRED)	38mm PRESSURE REDUCING VALVE (IF REQUIRED)	50mm PRESSURE REDUCING VALVE (IF REQUIRED)
14	38mm HYDROMETER, 38mm BRASS COUPLER w/ 38mm x 25mm BRASS REDUCING BUSHING	38mm HYDROMETER w/ 38mm BRASS COUPLERS	50mm HYDROMETER
15	DOWNWARD FACING BLOW-OUT ASSEMBLY w/ 25mm BRASS TEE, 25mm BRASS NIPPLE, 25mm BRASS BALL VALVE, w/ PLUG	DOWNWARD FACING BLOW-OUT ASSEMBLY w/ 38mm x 25mm BRASS TEE, 25mm BRASS NIPPLE, 25mm BRASS BALL VALVE, w/ PLUG	DOWNWARD FACING BLOW-OUT ASSEMBLY w/ 50mm x 25mm BRASS TEE, 25mm BRASS NIPPLE, 25mm BRASS BALL VALVE, w/ PLUG
16	BLOW-OUT ASSEMBLY w/ 25mm BRASS TEE, 25mm BRASS NIPPLE, 25mm BRASS BALL VALVE	BLOW-OUT ASSEMBLY w/ 38mm x 25mm BRASS TEE, 25mm BRASS NIPPLE, 25mm BRASS BALL VALVE	BLOW-OUT ASSEMBLY w/ 50mm x 25mm BRASS TEE, 25mm BRASS NIPPLE, 25mm BRASS BALL VALVE
17	BRASS COUPLER SIZED TO MAINLINE w/ 25mm REDUCING BUSHING.	BRASS COUPLER SIZED TO MAINLINE w/ 38mm REDUCING BUSHING.	BRASS COUPLER SIZED TO MAINLINE w/ 50mm REDUCING BUSHING.
18	PVC MAINLINE: SCH 80 NIPPLE CUT IN HALF AND SOLVENT WELDED TO SCH 80 COUPLER SIZED TO MAINLINE, THREADED INTO BRASS COUPLER HDPE MAINLINE: MIPT-NPT TRANSITION FITTING SIZED TO MAINLINE	PVC MAINLINE: SCH 80 NIPPLE CUT IN HALF AND SOLVENT WELDED TO SCH 80 COUPLER SIZED TO MAINLINE, THREADED INTO BRASS COUPLER HDPE MAINLINE: MIPT-NPT TRANSITION FITTING SIZED TO MAINLINE	PVC MAINLINE: SCH 80 NIPPLE CUT IN HALF AND SOLVENT WELDED TO SCH 80 COUPLER SIZED TO MAINLINE, THREADED INTO BRASS COUPLER HDPE MAINLINE: MIPT-NPT TRANSITION FITTING SIZED TO MAINLINE
19	100mm DRAIN HOLE w/ GRATE	100mm DRAIN HOLE w/ GRATE	100mm DRAIN HOLE w/ GRATE
20	50mm DB2 ELECTRICAL CONDUIT TO KIOSK	50mm DB2 ELECTRICAL CONDUIT TO KIOSK	50mm DB2 ELECTRICAL CONDUIT TO KIOSK

- NOTE:
- APPLY EXPANDING FOAM TO SEAL ALL PIPE PENETRATIONS MADE IN VAULT
 - ALL FLANGES TO BE INSTALLED AS PER MANUFACTURER'S RECOMMENDATIONS w/ STAINLESS STEEL BOLTS
 - INSTALL AIR RELIEF VALVE ON BLOW-OUT ASSEMBLY UPSTREAM OF THE BACKFLOW



SIDE VIEW

- LID
- KON KAST 1102 SPLICE BOX
- SAND BEDDING
- MAINLINE TO TRENCH DEPTH
- KON KAST 1102 BASE w/ 100mmØ DRAIN
- 150mm DEPTH OF 98% SPD COMPACTED 25mm MINUS GRANULAR BASE
- MIN 0.5% GRADE
- 100mm PVC DRAIN PIPE TO TIE INTO DRAINAGE SYSTEM OR TO DRAIN PIT CONSISTING OF 2m³ OF 25mm MINUS DRAIN ROCK WRAPPED IN LANDSCAPE FABRIC

DETAIL TITLE:

DETAIL No.: **SS-IR.03a**

SCALE: **1:20**

APRIL 2024